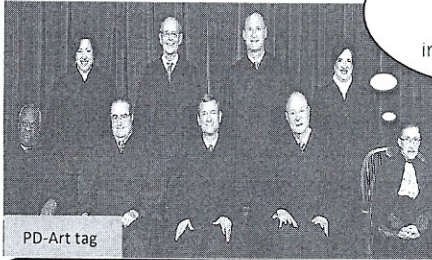


I read \_\_\_\_\_ Words  
in \_\_\_\_\_ Minutes

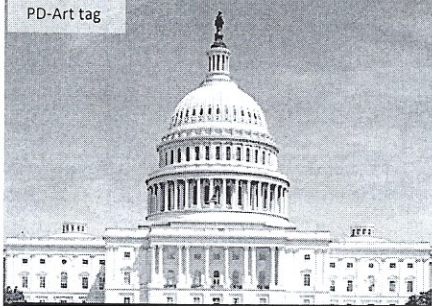
# U.S. Government

## Basic FACTS of the 3 Branches



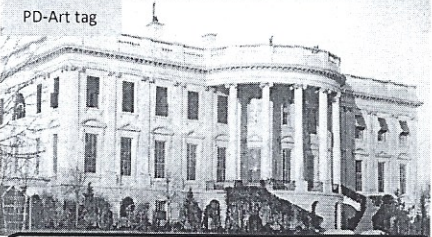
PD-Art tag

The judicial branch of the U.S Government has 9 judges. Their office is the Supreme Court building. They study, vote, and protect laws that protect people's rights from the government.



PD-Art tag

The legislative branch works in The Capitol Building. The building has seats for congress. There are over 500 members, over 400 representatives of the people, and 100 senators.



PD-Art tag

The executive branch works from the White House. All 3 branches are in Washington D.C. The president goes to all three. The president has to work with the others to get things done.

The United States has a government created by and for the people. The U.S. Constitution is the law that set up three branches of government to make a "balance of power", so no one gets too much control. Each branch of the United States Government has a duty to perform for all Americans.

The **judicial branch** protects the rights of the people and interprets the law to ensure they follow the constitution. The Judicial Branch upholds these laws so Americans can retain their justice and freedom from the government and each other.

The **legislative branch** is also called congress and consists of congressmen and women. Voters choose them from their area to represent their beliefs. Congress will create laws, vote on important issues, and stand-up for the Americans that voted them into the legislative branch.

The **executive branch** is popular because it consists of the president and staff. The president and workers represent the whole country. They consult with other leaders and give speeches. A myth is the president is a king, but the fact is they must work with the other branches to accomplish duties.

8
18
28
38
47
53
61
70
77
85
92
99
106
114
122
130
135
142
150
157
166
178
186

1. What is the main idea of the information in the text? \_\_\_\_\_

---

---

---

2. Write two to three details from the passage to support the main idea.

---

---

---

3. Explain how a picture and caption connects to the passage. \_\_\_\_\_

---

---

---

# U.S. Government

## **Basic FACTS of the 3 Branches**

1. What is the reason for the point of having a “balance of power”? Use key facts from the passage to explain.

---

---

---

2. Find the bold word **judicial branch**. What are some reasons for having a judicial branch? Use two key details from the passage in your answer.

---

---

---

3. Which branch of government has the most workers? Use evidence to explain the reason for this point.

---

---

---

4. Choose, circle, define, or write a sentence with two vocabulary words:  
interprets                      upholds                      represent                      staff

---

---

---

---

**Bonus:**

Make a list or write FACTS about the executive branch of government.

---

---

---